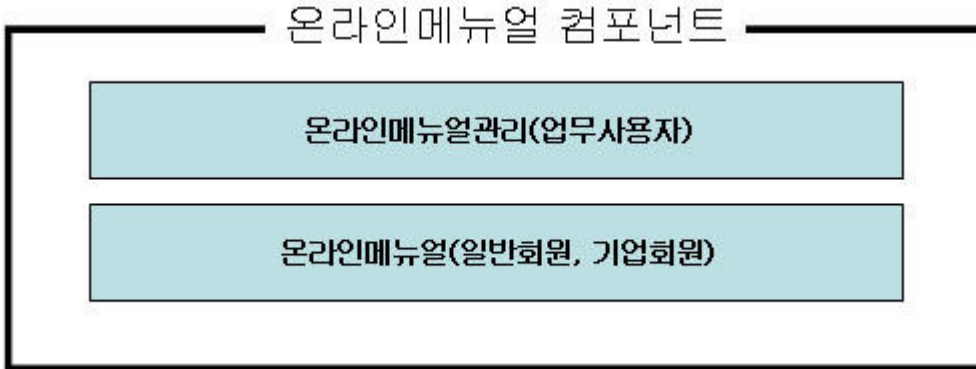


Online Manual

Summary

It provides the function to register and search program online manual.

- Component Configuration



- Feature Flow

기능 명	기능 흐름
업무사용자 관리	관리자 로그인 → 온라인메뉴얼 관리 목록 → 온라인메뉴얼 관리 등록 → 온라인메뉴얼 관리 상세조회 → 온라인메뉴얼 관리 수정
일반회원 관리	사용자 로그인 → 온라인메뉴얼 목록조회 → 온라인메뉴얼 상세조회
기업회원 관리	

Description

Package Dependency

The online manual package has direct functional dependency to the common package (cmm) of element technology and authorization management package. However, for executing without errors in component distribution, the distribution package should include format/date/calculation, and web-editor package.

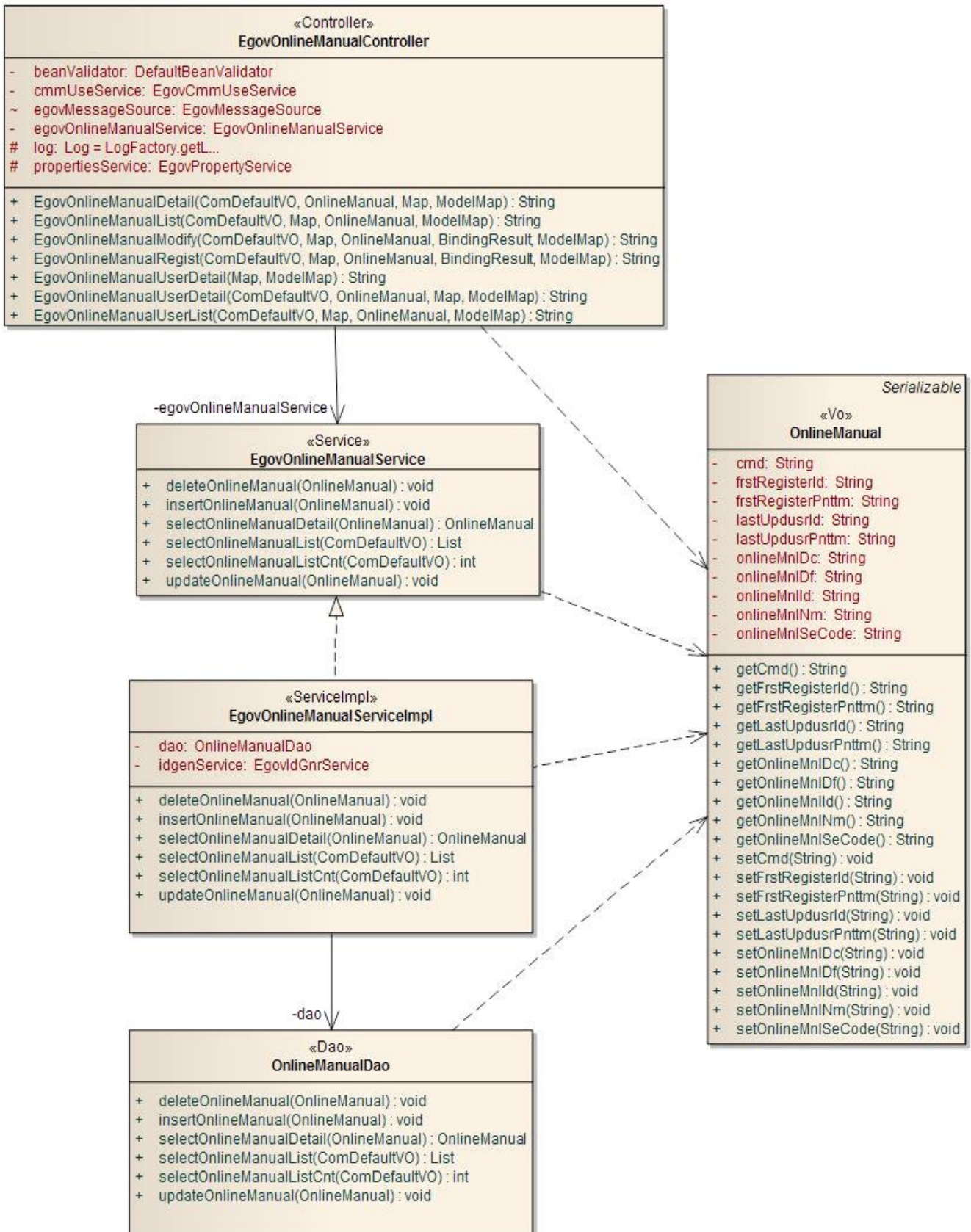
- Package Dependency: [User Support Package Dependency](#)

Related Source

Type	Source	Remarks
Controller	egovframework.com.uss.olh.omm.web.EgovOnlineManualController.java	Controller class for online manual management
Service	egovframework.com.uss.olh.omm.service.EgovOnlineManualService.java	Service interface for online manual management
ServiceImpl	egovframework.com.uss.olh.omm.service.impl.EgovOnlineManualServiceImpl.java	ServiceImpl Class for online manual management
Model	egovframework.com.uss.olh.omm.service.OnlineManual.java	Model Class for online manual management
VO	egovframework.com.cmm.ComDefaultVO.java	Search VO Class
DAO	egovframework.com.uss.olh.omm.service.impl.OnlineManualDao.java	Dao class online manual management
JSP	/WEB-INF/jsp/egovframework/com/uss/olh/omm/EgovOnlineManualList.jsp	List inquiry page for online manual management

JSP	/WEB-INF/jsp/egovframework/com/uss/olh/omm/EgovOnlineManualRegist.jsp	Registration page for online manual management
JSP	/WEB-INF/jsp/egovframework/com/uss/olh/omm/EgovOnlineManualModify.jsp	Revision page for online manual management
JSP	/WEB-INF/jsp/egovframework/com/uss/olh/omm/EgovOnlineManualDetail.jsp	Detailed inquiry page for online manual management online manual management
QUERY XML	/egovframework/sqlmap/com/uss/olh/omm/EgovOnlineManual_SQL_Mysql.xml	MySQL based QUERY XML for online manual management
QUERY XML	/egovframework/sqlmap/com/uss/olh/omm/EgovOnlineManual_SQL_Oracle.xml	Oracle based QUERY XML for online manual management
QUERY XML	/egovframework/sqlmap/com/uss/olh/omm/EgovOnlineManual_SQL_Tibero.xml	Tibero based QUERY XML for online manual management
QUERY XML	/egovframework/sqlmap/com/uss/olh/omm/EgovOnlineManual_SQL_Altibase.xml	Altibase based QUERY XML for online manual management
Validator Rule XML	resources/egovframework/validator/validator-rules.xml	XML that defined the validator rule
Validator XML	resources/egovframework/validator/com/uss/olh/omm/EgovOnlineManual.xml	Validator XML for online manual management
Message properties	resources/egovframework/message/com/message-common_ko_KR.properties	Message properties for online manual management
Idgen XML	resources/egovframework/spring/context-idgen.xml	Id Idgen XML for online manual management

Class Diagram



Related Codes

Code Type	Code Type Name	Code ID	Code Name
COM041	Online Manual	001	Process Description
COM041	Online Manual		Feature Description
COM041	Online Manual	003	Etc Description

ID Generation

ID Generation related DDL and DML

- To utilize ID Generation Service, **ONLINE_MUL_ID** is added to the Sequence storage table, COMTECOPSEQ.

```
CREATE TABLE COMTECOPSEQ ( table_name varchar(16) NOT NULL,  
                           next_id DECIMAL(30) NOT NULL,  
                           PRIMARY KEY (table_name));  
INSERT INTO COMTECOPSEQ VALUES('ONLINE_MUL_ID','0');
```

ID Generation Configuration (context-idgen.xml)

```
<bean name="egovOnlineManualIdGnrService"  
      class="egovframework.rte.fdl.idgnr.impl.EgovTableIdGnrService"  
      destroy-method="destroy">  
  <property name="dataSource" ref="egov.dataSource" />  
  <property name="strategy" ref="onlineManualMsgstrategy" />  
  <property name="blockSize" value="1"/>  
  <property name="table" value="COMTECOPSEQ"/>  
  <property name="tableName" value="ONLINE_MUL_ID"/>  
</bean>  
<bean name="onlineManualMsgstrategy"  
      class="egovframework.rte.fdl.idgnr.impl.strategy.EgovIdGnrStrategyImpl">  
  <property name="prefix" value="OMUL_" />  
  <property name="cipers" value="15" />  
  <property name="fillChar" value="0" />  
</bean>
```

Related Table

Table Name	Table Name (English)	Note
online manual management	COMTNONLINEMANUAL	Manages online manual

Related Function

The online manual management function is composed of **online manual management list inquiry, detailed online manual management inquiry, online manual management register and online manual management update.**

Online manual management list inquiry

Business Rule

The manager can inquire information on the pre-registered online manual management as a list and move to registration screen by clicking the Register button.

Related Codes

N/A

Screen and execution manual

Action	URL	Controller method	QueryID
List Inquiry	/uss/olh/omn/listOnlineManual.do	egovOnlineManualUserList	"OnlineManual.selectOnlineManual", "OnlineManual.selectOnlineManualCnt"

순번	구분	온라인메뉴얼명	등록자	등록일자
1	절차설명	TestData 20091013	TEST7	2009-10-13
2	절차설명	온라인 메뉴얼 절차 설명 메뉴얼	TEST1	2009-10-09
3	절차설명	11111111111111	TEST1	2009-10-09
4	절차설명	메뉴얼명1	TEST4	2009-10-09
5	절차설명	명-온라인메뉴얼명온라인메뉴얼명온라인메뉴얼명온라인메뉴얼명온라인메뉴얼명온	TEST1	2009-10-07
6	절차설명	온라인POLL관리	TEST1	2009-09-22
7	절차설명	행정용어사전	TEST1	2009-09-17
8	기타설명	통합링크	TEST1	2009-08-19
9	기능설명	온라인POLL관리	TEST1	2009-08-19

1

Register: Click the Register button to register manual in **Online manual management registration** page.

Online Manual Name List: Displays **Detailed inquiry of online manual management list**.

Detailed inquiry of online manual management list

Business rule

This is the screen by clicking the List from the online manual management list which shows detailed information on the online manual management.

Related codes

N/A

Screen and execution manual

Action	URL	Controller method	QueryID
Detailed inquiry	/uss/olh/omn/detailOnlineManual.do	egovOnlineManualUserDetail	"OnlineManual.selectOnlineManualDetail"
Delete	/uss/olh/omm/detailOnlineManual.do	egovOnlineManualDetail	"OnlineManual.deleteOnlineManual"

온라인메뉴얼관리 상세보기

온라인메뉴얼명 *	공통폼포넌트 팝업창관리 메뉴얼
온라인메뉴얼구분 *	절차설명
온라인메뉴얼정의 *	공통폼포넌트 팝업창관리 메뉴얼 공통폼포넌트 팝업창관리 메뉴얼 사용절차
온라인메뉴얼설명 *	1) 팝업창관리 목록 조회 2)팝업창관리 정보 등록 3)팝업창관리 목록 3)팝업창미리보기

삭제

수정

목록

Delete: Delete manual item by clicking the Delete button.

List: Displays **Online manual management list** page.

Update: Click the Update button to display **Online manual management update** page.

Online manual management registration

Business Rule

This stores the basic information of the online manual management. The red star (*) on the right shows the mandatory item.

Related Codes

N/A

Screen and execution manual

Action	URL	Controller method	QueryID
Register	/uss/olh/omm/registOnlineManual.do	egovOnlineManualRegist	"OnlineManual.insertOnlineManual"

온라인메뉴얼관리 등록

온라인메뉴얼명 * 공통컴포넌트 팝업창관리 메뉴얼

온라인메뉴얼구분 * 절차설명

온라인메뉴얼정의 * 공통컴포넌트 팝업창관리 메뉴얼

온라인 메뉴얼설명 *

Times New Roman 3 (12 pt) - format - **B** *I* U ~~S~~ x₂ x² [Icons]

공통컴포넌트 팝업창관리 메뉴얼 사용절차

1) 팝업창관리 목록 조회

2)팝업창관리 정보 등록

3)팝업창관리 목록

3)팝업창미리보기

[목록] [저장]

List: Displays **Online manual management list** page.
Save: Stores new online manual management item with input values.

Online manual management update

Business rule

The red star (*) on the right of the type shows the mandatory item.

Related Code

N/A

Screen and execution manual

Action	URL	Controller method	QueryID
Update	/uss/olh/omm/updtOnlineManual.do	egovOnlineManualModify	"OnlineManual.updateOnlineManual"

온라인메뉴얼관리 수정

온라인메뉴얼명 *	공통컴포넌트 팝업창관리 메뉴얼
온라인메뉴얼구분 *	절차설명
온라인메뉴얼정의 *	공통컴포넌트 팝업창관리 메뉴얼
온라인 메뉴얼설명 *	<p>공통컴포넌트 팝업창관리 메뉴얼 사용절차</p> <ol style="list-style-type: none">1) 팝업창관리 목록 조회2)팝업창관리 정보 등록3)팝업창관리 목록3)팝업창미리보기

Times New Roman | 3 (12 pt) | - format - | **B** / *I* / U / / / / / / / /

목록 저장

Save: Updates item with modified information.

List: Displays **Online manual management list** page.

Reference

- Refer to Operation Environment: [ID Generation Service](#)